

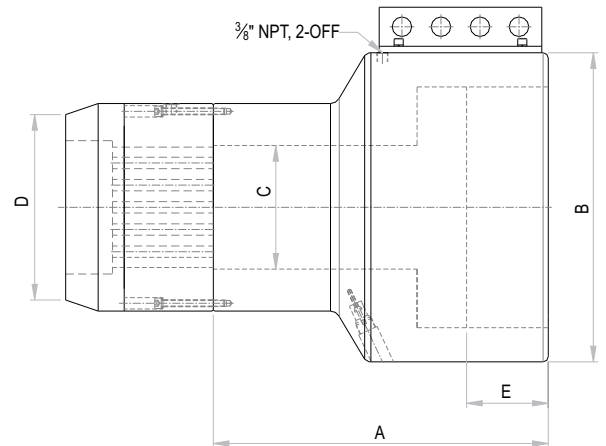
Multi Stand Jacks - Long Profile

Capacity 200 - 425 ton / Stroke 150 - 300 mm / Working Pressure 650 bar



Application / Features

- Pre-stressing and post tensioning of strands in concrete structure.
- Mechanical stroke limiter (by-pass type) and pressure relief valve on return side for safety.
- Suitable calibrated power pack units and accessories available.



OML Series - **O** Orione **M** Multi strand **L** Long profile **200** Capacity - ton **200** Stroke - mm

Capacity (ton)	Capacity (kN)	Stroke (mm)	Model	No. of Strands		Effective area (cm ²)	Oil Cap. (cc)	Closed height A (mm)	Cylinder OD B (mm)	C'hole dia. C (mm)	Nose dia. D (mm)	Depth E (mm)	Wt. (Approx.) (kg.)
				05" Size	06" Size								
200	2013	300	OML 200-300	12	7	309.6	9290	785	315	120	240	327	265
350	3517	300	OML 350-300	19	12	541.1	16234	830	430	165	290	330	450
425	4288	150	OML 425-150	31	19	659.7	9900	515	475	190	315	177	390



POWER PACK SPECIFICATION

Power pack Model	Motor (HP)	Oil tank capacity (liters)	Pump flow (l/min)	Max. working pressure (bar)	Weight (Approx.) (kg.)	Operation
OPU005111	5	40	2.6	700	142	Manual (Rotary DCV)

- Higher capacity and customized solutions on request. ■ Specifications are subject to change due to continual improvement.
- Capacity and Stroke specified are maximum safe limits. As safe practice, use at 80% of rating.

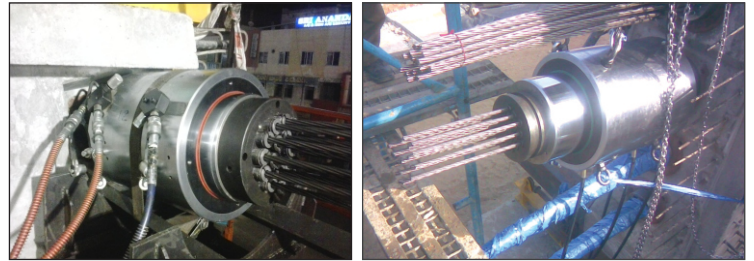
Multi Strand Jacks With Wedge Lock Short Profile

Capacity 100 - 1500 ton / Stroke 200 mm / Working Pressure 600 bar

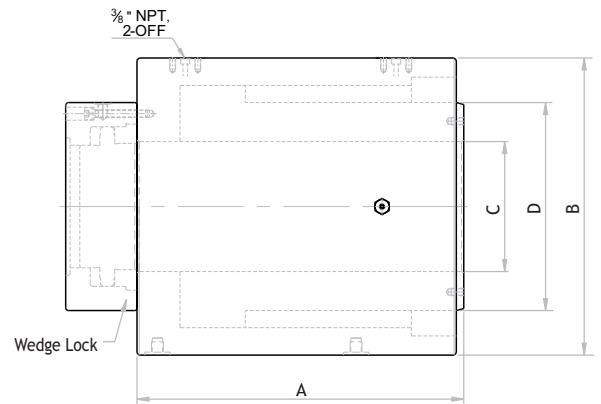


Features / Application

- Pre-stressing & post tensioning of strands in concrete structure.
- Relief valve in return line for safety.
- Suitable calibrated power pack units and accessories available.



Double Acting Wedge Lock Arrangement



OMS Series - **O** Orione **M** Multi strand **S** Short profile **100** Capacity - ton **200** Stroke - mm

Capacity (ton)	Capacity (kN)	Stroke (mm)	Model	Maximum No. of Strands		Effective area (cm ²)	Oil Cap. (cc)	Closed height A (mm)	Cylinder OD B (mm)	C'hole dia. C (mm)	Ram dia. D (mm)	Wt. (Approx.) (kg.)
				05" Size	06" Size							
100	1181	200	OMS 100-200	7	5	196.9	3939	405	240	90	155	110
200	2200	200	OMS 200-200	12	7	366.8	7340	395	330	145	230	185
300	3561	200	OMS 300-200	19	12	593.5	11870	455	400	175	280	305
480	4675	200	OMS 480-200	31	19	779.1	15582	530	470	195	315	525
680	7521	200	OMS 680-200	42	27	1253.5	25070	570	580	240	360	845
1050	10576	200	OMS 1050-200	61	42	1762.6	35253	615	750	305	480	1670
1500	15781	200	OMS 1500-200	-	55	2630.1	52603	700	960	340	585	3300



POWER PACK SPECIFICATION

Power pack Model	Motor (HP)	Oil tank capacity (liters)	Pump flow (l/min)	Max. working pressure (bar)	Weight (Approx.) (kg.)	Operation
OPU005111	5	40	2.6	700	142	Manual (Rotary DCV)

- Higher capacity and customized solutions on request. ■ Specifications are subject to change due to continual improvement.
- Capacity and Stroke specified are maximum safe limits. As safe practice, use at 80% of rating.

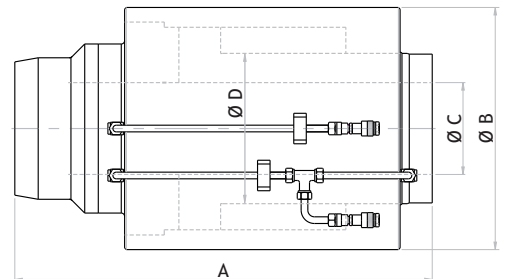
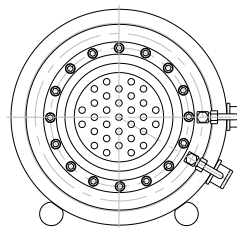
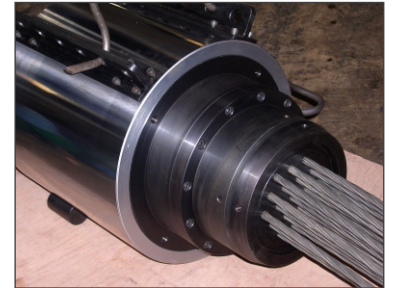
Multi Strand Jacks With Integral Wedge Lock

Capacity 300 - 1500 ton / Stroke 200 - 300 mm / Working Pressure 600 bar



Features / Application

- Pre-stressing & post tensioning of strands in concrete structure.
- Relief valve in return line for safety.
- Suitable calibrated power pack units and accessories available.



OMI Series - **O** Orione **M** Multi strand **I** Integral wedge lock **300** Capacity - ton **300** Stroke - mm

Capacity (ton)	Capacity (kN)	Stroke (mm)	Model	Maximum No. of Strands		Effective area (cm ²)	Oil Cap. (cc)	Closed height A (mm)	Cylinder OD B (mm)	C'hole dia. C (mm)	Ram dia. D (mm)	Wt. (Approx.) (kg.)
				05" Size	06" Size							
100	1455	300	OMI 100-300	7	5	242.5	7275	810	270	90	160	220
200	2333	300	OMI 200-300	12	7	388.8	11664	845	350	145	230	360
300	3370	300	OMI 300-300	19	12	561.6	16847	870	400	175	280	460
480	5003	300	OMI 480-300	31	19	833.9	25017	925	520	195	340	910
680	7521	300	OMI 680-300	42	27	1253.5	37605	1000	600	240	375	1480
1050	10576	300	OMI 1050-300	61	42	1762.6	52880	1200	750	280	480	2210
1500	15097	300	OMI 1500-300	-	55	2516.2	75490	1285	960	340	540	4100



POWER PACK SPECIFICATION

Power pack Model	Motor (HP)	Oil tank capacity (liters)	Pump flow (l/min)	Max. working pressure (bar)	Weight (Approx.) (kg.)	Operation
OPU007.564	7.5	40	3.7	700	195	Manual (Rotary DCV)

- Higher capacity and customized solutions on request. ■ Specifications are subject to change due to continual improvement.
- Capacity and Stroke specified are maximum safe limits. As safe practice, use at 80% of rating.